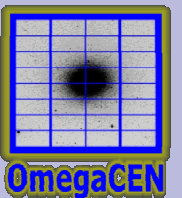


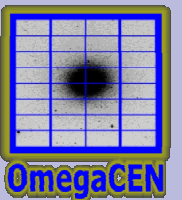
# SourceLists & AssociateLists

- Parallel Tables
- External SourceLists
- CombinedLists
- SourceLinks
- New Developments / Problems



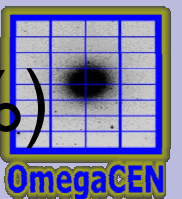
# Parallel Tables

- Oracle Table limit < 1000 columns
- Better for external SourceLists
- Easier for DB tuning and table statistics
- Space saving on other nodes (DB links)



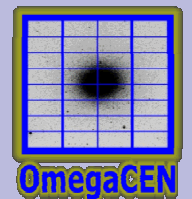
# External SourceLists

- USNO A2.0, # 526.280.881 (100%)
- SDSS PhotoObjAll-DR5, # 354.254.163 (29%)
- SDSS Photoz-DR5, # 354.188.961 (29%)
- SDSS SpecObjAll-DR5, # 1.048.960 (19%)
- UKIDSS lasSource-DR3, # 36.250.945 (85%)
- 2MASS PSC, # 470.992.970 (0%)
- 2MASS XSC, # 1.647.599 (0%)

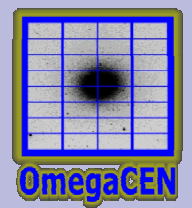
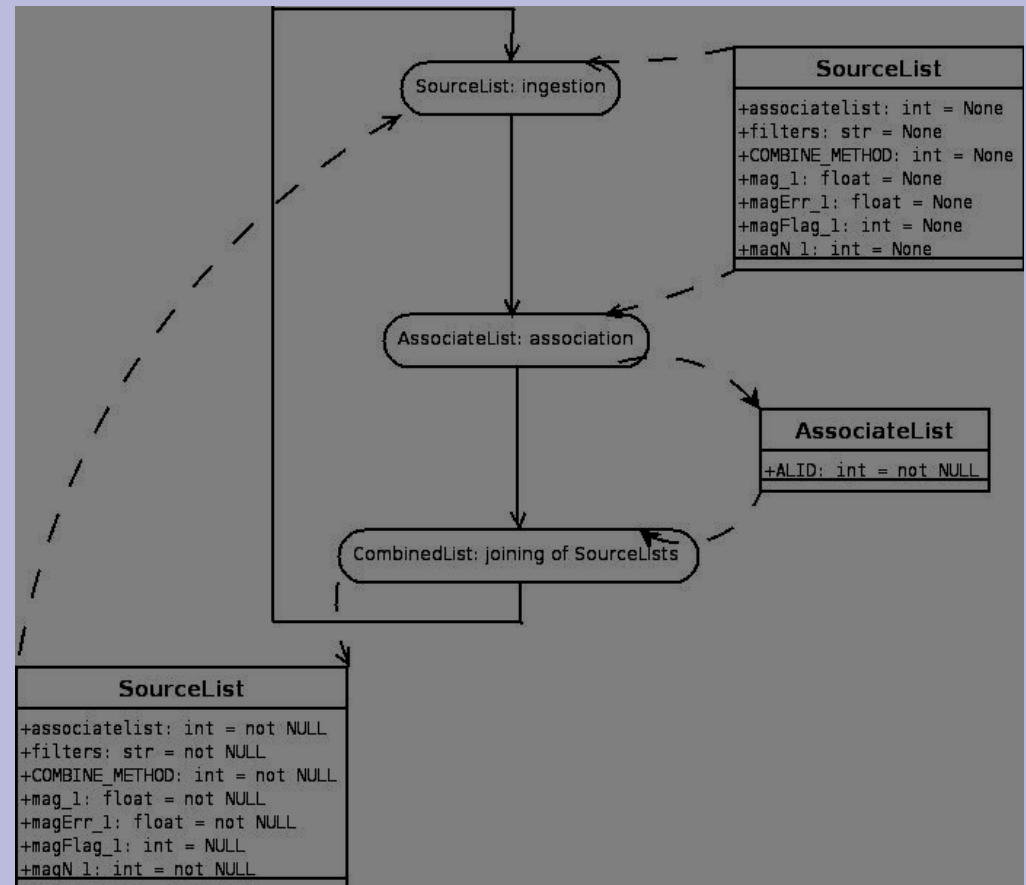
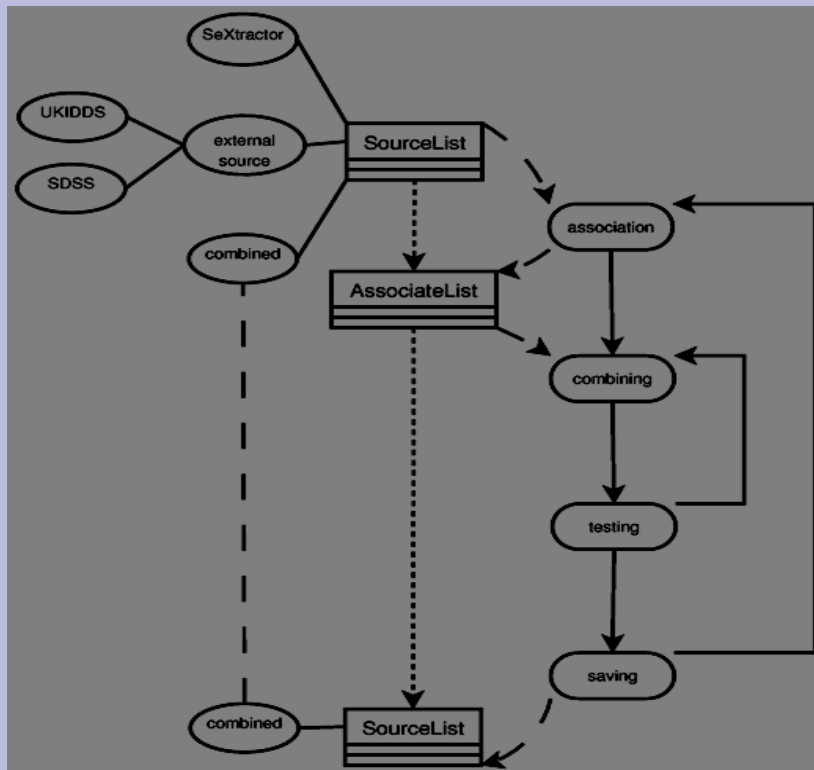


# CombinedList

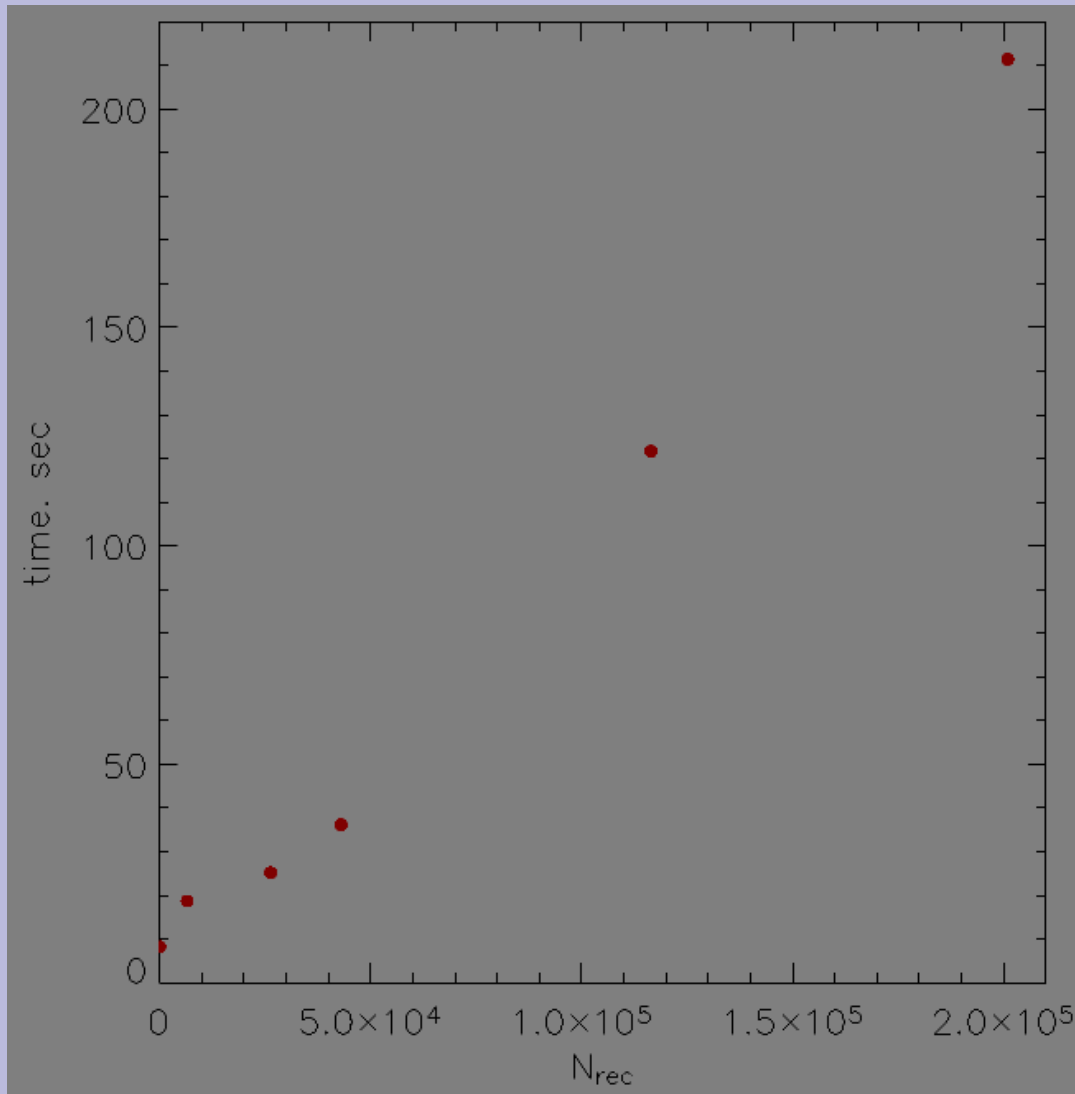
- ❖ Not a Class, but a set of functions
- ❖ All operations on DataBase level
- ❖ AssociateList → Single Source Catalogue
- ❖ AID → SID
- ❖ filters='MAG\_1:#849,MAG\_2:#850'



# CombinedList

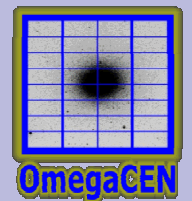


# CombinedList



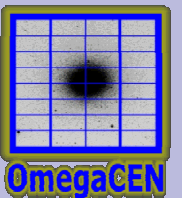
Estimation:

100.000.000 sources in 4 days  
by 100,000 chunks



# SourceLink

- Required for Individual Source Processing (i.e. for Galfit, Galphot)
- Provides a pointer to a Source in a SourceList



# New Developments / Problems

- Associate Large SourceLists
- Maximum number of SourceLists to Associate should be increased
- Problems with HTM software
- Mosaic AssociateList
- Combine AssociateLists
- Import/Export SL from/to XML

