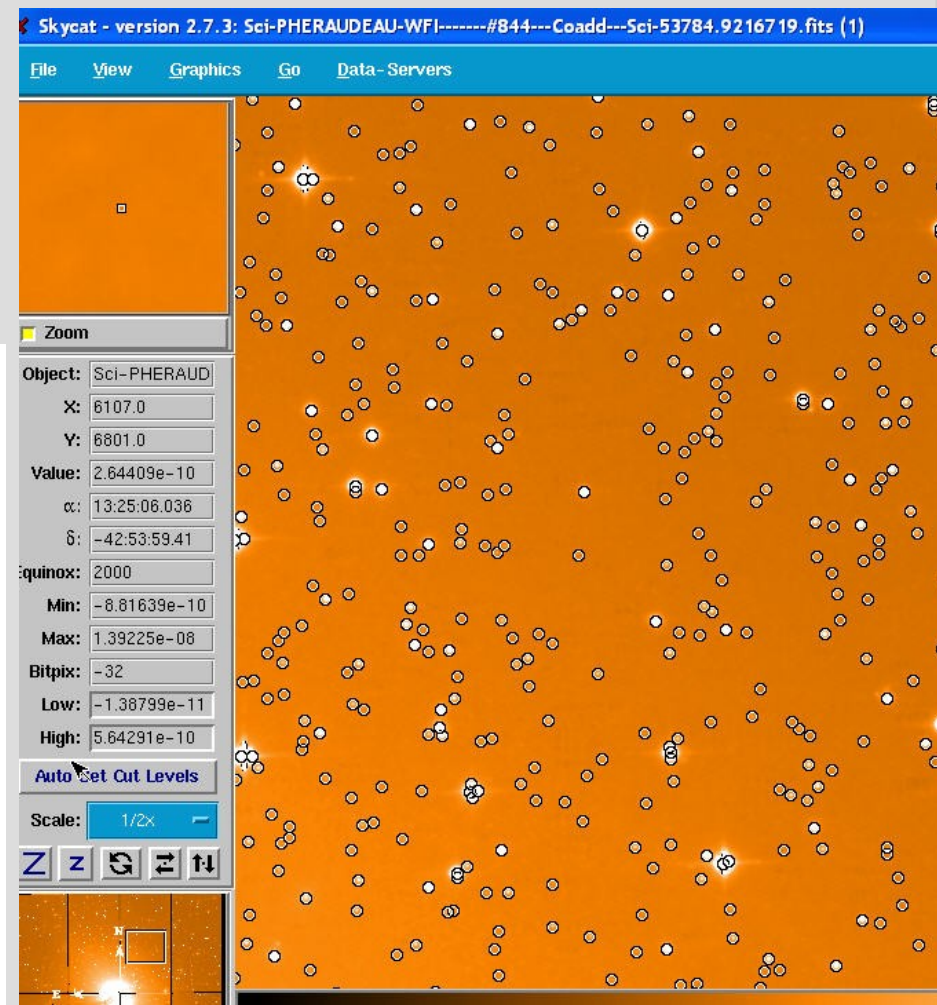
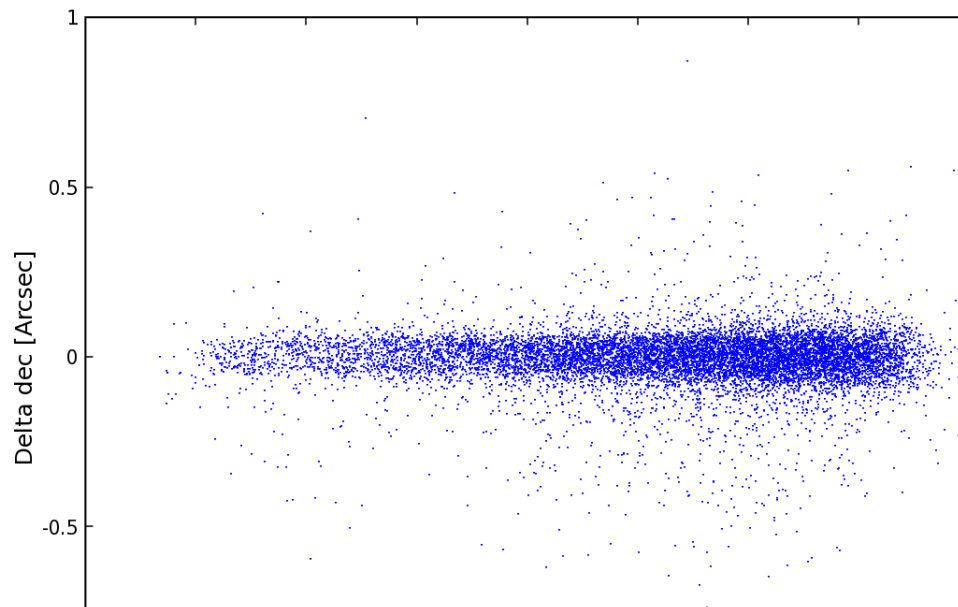


# Astro-WISE & PLASTIC

Hugo Buddelmeijer  
Kapteyn Astronomical Institute  
2008/04/01 Lorentz Center

# Introduction

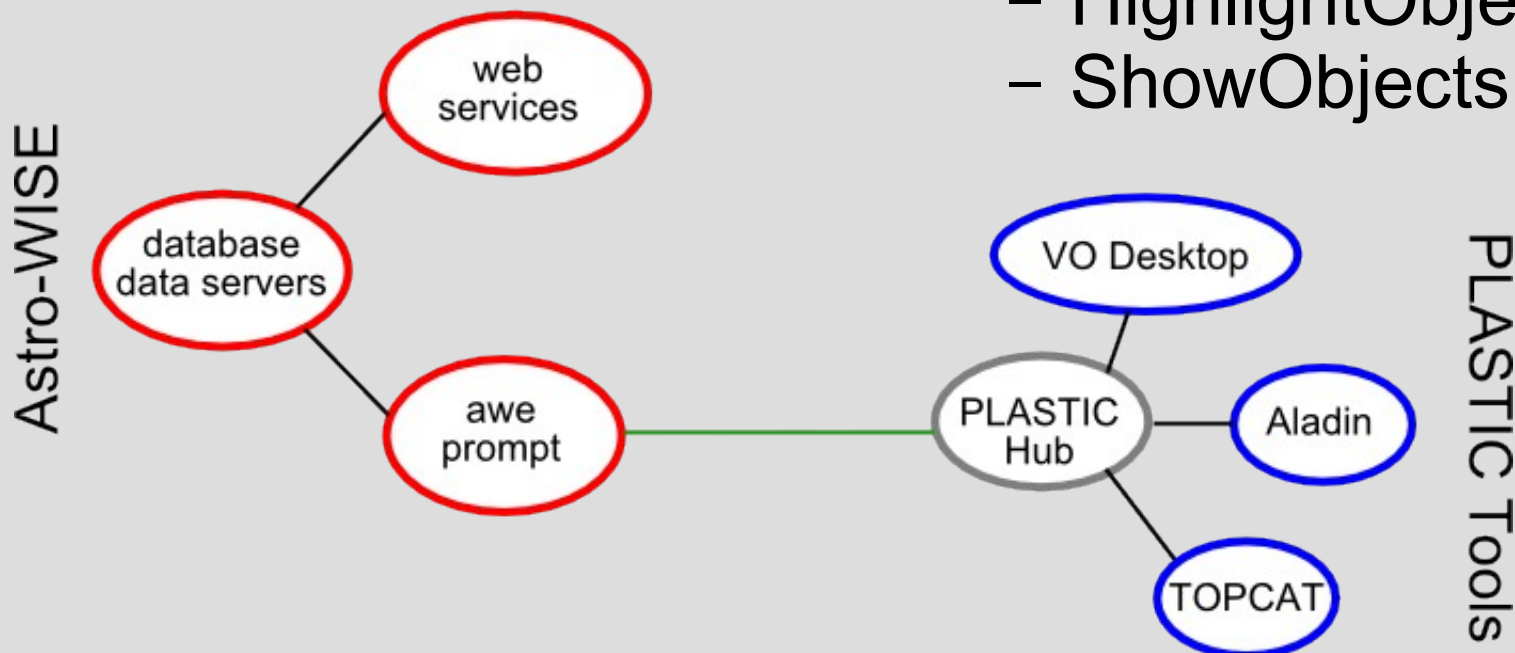
- Visualization in Astro-WISE
- Skycat, matplotlib
- Not interactive!
- PLASTIC



# PLASTIC

- PPlatform for AStronomical Tool InterConnection
  - protocol, not program

- Messages
  - LoadTable
  - LoadImage
  - HighlightObject
  - ShowObjects



# Demonstration

- 1) Start the PLASTIC HUB & Applications
- 2) Start awe
- 3) Connect to PLASTIC
- 4) Fetch SourceList
- 5) Broadcast SourceList
- 6) Select sources in Aladin/TOPCAT
- 7) Run GalFit on selected sources

# Extra & Future

- Astrogrid services?
  - Registry query
  - ADQL queries
  - Myspace access
- Ingest?
  - SourceLists
  - Frames

# Technical

## 1) ThreadXMLRPC class

- Threaded XML-RPC server

## 2) PlasticProxy class

- All PLASTIC logic, stand alone

## 3) Plastic class

- All Astro-WISE logic